

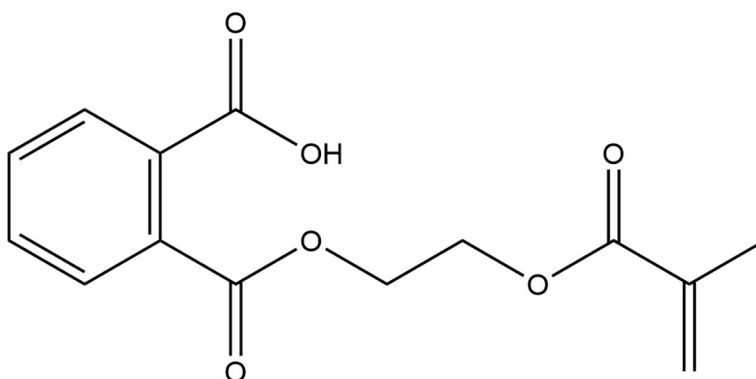


Mono HEMA Phthalate FP 5340

General

Mono HEMA Phthalate is a liquid monomer designed for dental, adhesive, and emulsion applications. It can be combined with acrylic resins and other UV curable resins. It is ideal when aromatic carboxylic acids are desired with methacrylate functionality. Mono HEMA Phthalate is stabilized with MeHQ.

Chemical Structure



Product Information

Product Type:	Monomer; Adhesion Promoter
CAS Number:	27697-00-3
Product Name:	Mono(2-methacryloyloxyethyl) phthalate
Synonyms:	2-(Methacryloyloxy)ethyl hydrogen phthalate; 1,2-Benzenedicarboxylic acid mono(2-methacryloyloxyethyl) ester
Applications:	Dental Restoration; Adhesives
Key Features:	Improved Adhesion; Improved Emulsion
Shelf Life:	6 months, indoors, at 25 +/- 5°C

Typical Properties

Appearance:	Clear to Light Yellow Liquid
Molecular Weight:	278.26 g/mole
Density @ 25°C:	1.26 g/cc
Purity:	>95%

Safety and Handling

Keep the container tightly closed. Store in a cool and dark place. Store away from incompatible materials such as oxidizing agents. Handle in a well-ventilated area with suitable protective equipment.

Detailed information is provided in the SDS.

For additional information visit our website www.hampfordresearch.com.