



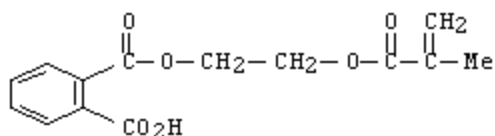
Mono HEMA Phthalate

FP code 5340

General

Mono HEMA Phthalate is an aromatic, carboxylic acid containing monomer. It is useful in many adhesive and emulsion applications where the functionality of a methacrylate is needed.

Chemical structure



Product information

CHEMICAL NAME:	1,2-Benzenedicarboxylic acid. Mono[2-[(2-methyl-1-oxo-2-propenyl)oxy]ethyl]ester
TRADE NAMES:	Mono HEMA Phthalate
MOLECULAR FORMULA:	C ₁₄ H ₁₄ O ₆
CAS NO.	27697-00-3
HRI CODE:	FP5340
REGISTRATIONS:	AICS, DSL, EINECS, ENCS, ECL
SHELF LIFE	6 months when stored indoor at 25(+/-5) degC

Hampford Research, Inc. disclaims any liability incurred in connection with the use of the data contained in this bulletin. Furthermore, nothing contained in this bulletin shall be construed as a recommendation to use any product in conflict with existing patents.

Typical properties

APPEARANCE:	Clear yellow liquid
INFRARED SPECTRUM	Nil anhydride
HPLC ASSAY-HEMA	less than 1%
HPLC ASSAY % MONO	>95%

Safety and Handling

Mono HEMA Phthalate should be handled in accordance with good industrial practice. Detailed information is provided in the SDS.

Mono HEMA Phthalate is sensitive to visible light and any exposure to sunlight should be avoided.

NOTE: Intellectual property issues cover the use of this material in select applications.
For additional information visit our website www.hampfordresearch.com.