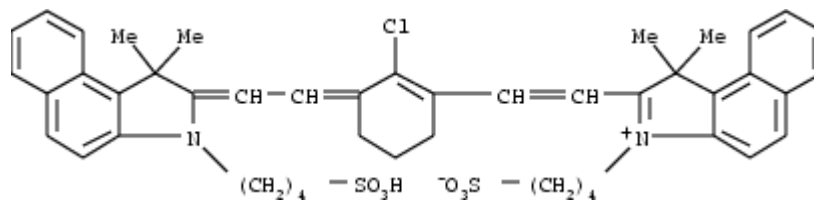
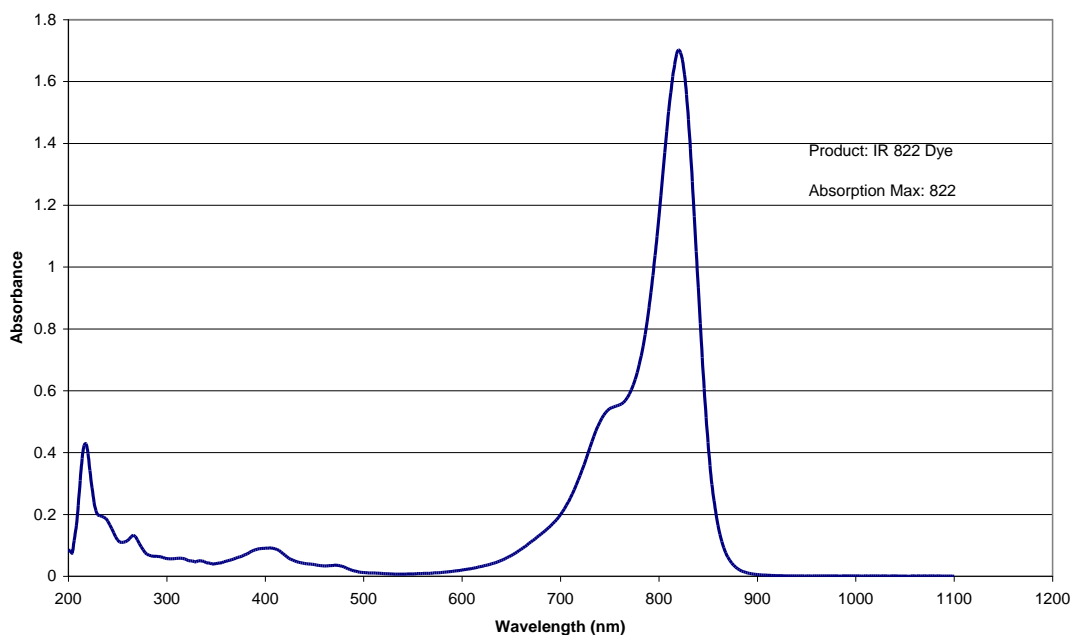


## IR 822 Dye FP5188



1H-Benz[e]indolium, 2-[2-[2-chloro-3-[2-[1,3-dihydro-1,1-dimethyl-3-(4-sulfobutyl)-2H-benz[e]indol-2-ylidene]ethylidene]-1-cyclohexen-1-yl]ethenyl]-1,1-dimethyl-3-(4-sulfobutyl)-, inner salt

### Spectrum



TRADE NAME:	IR 822
CAS NUMBER:	162411-28-1
CHEMICAL FORMULA:	C <sub>46</sub> H <sub>51</sub> Cl N <sub>2</sub> O <sub>6</sub> S <sub>2</sub>
APPEARANCE:	Dark Green Solid
LAMBDA MAX	822 NM
APPLICATIONS:	Lithographic computer to plate laser applications
REGISTRATIONS:	TSCA